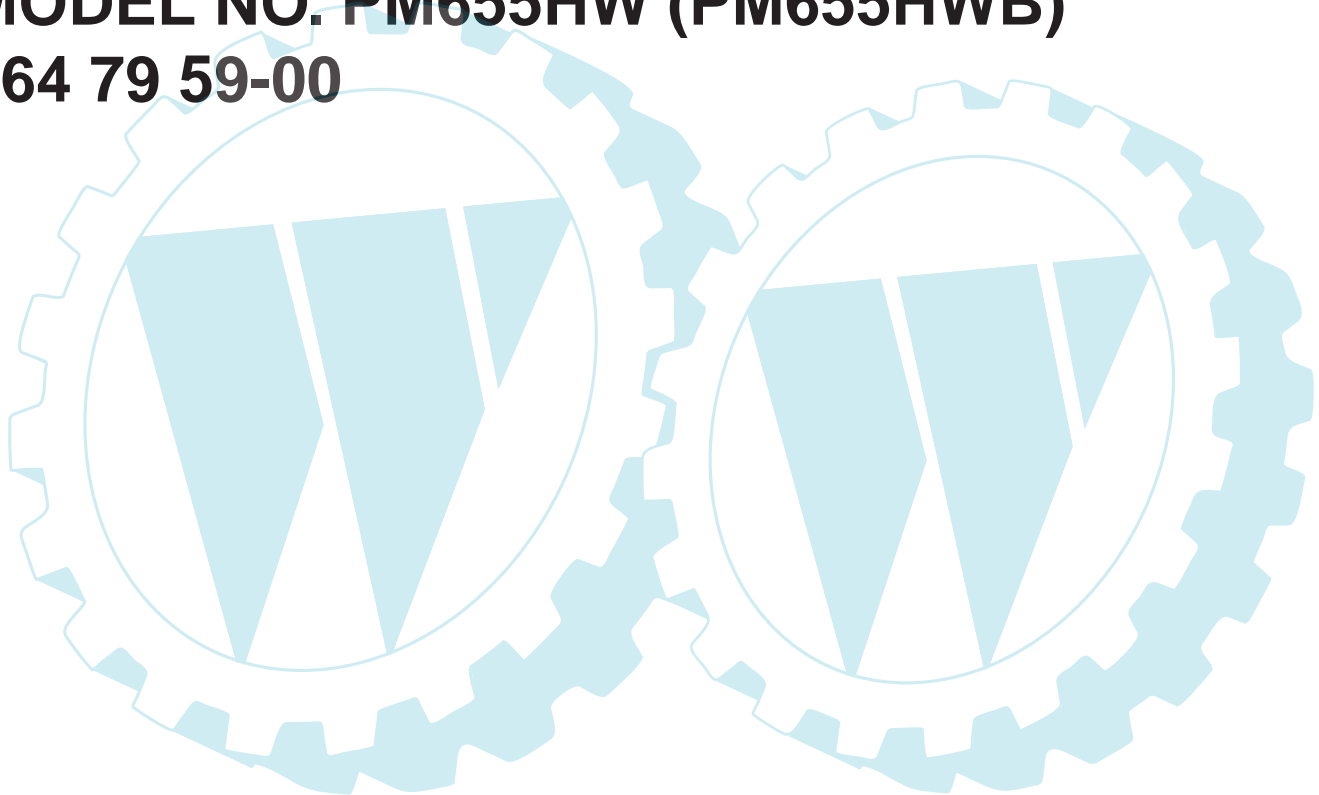
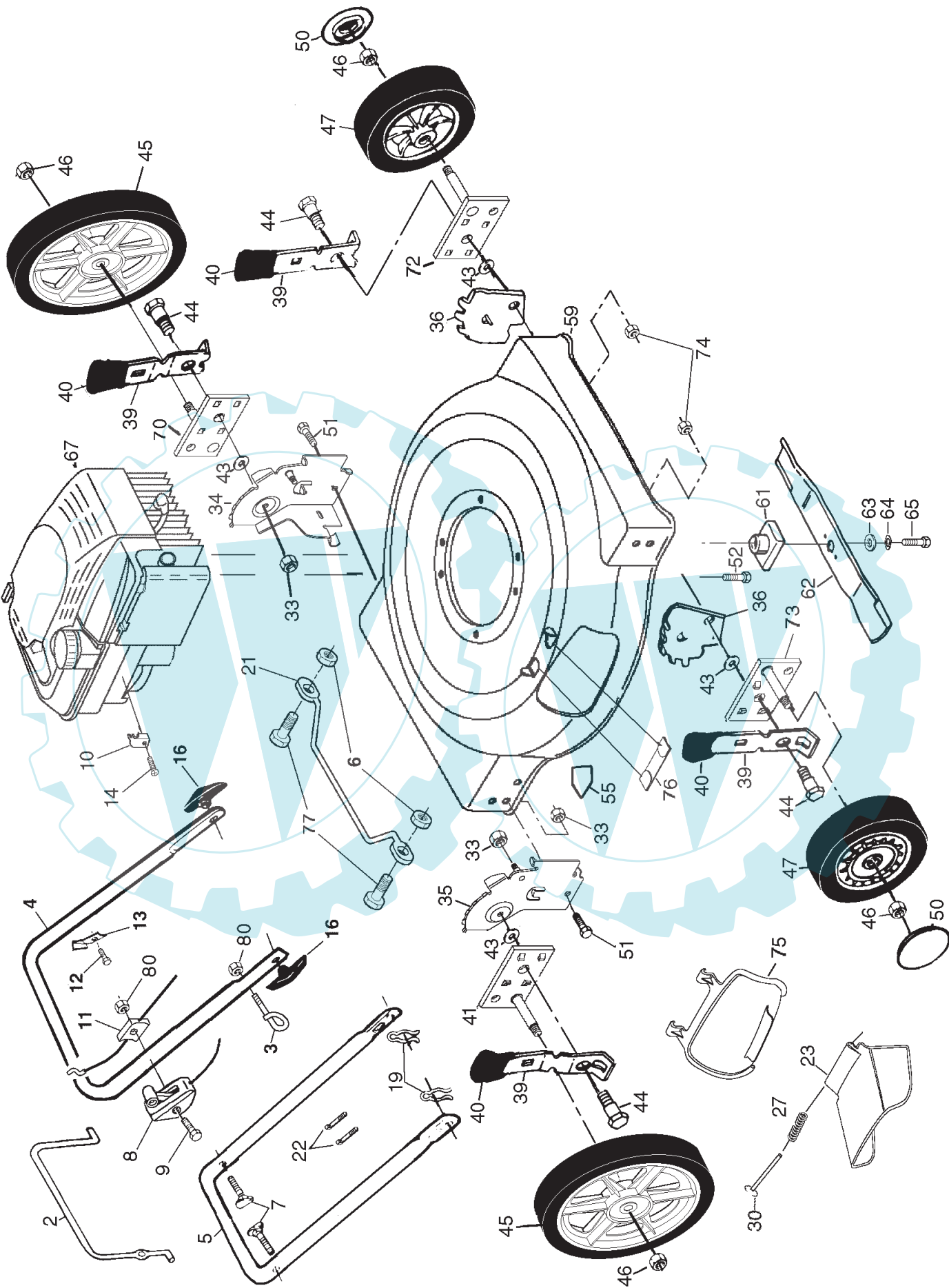


## ILLUSTRATED PARTS BREAKDOWN

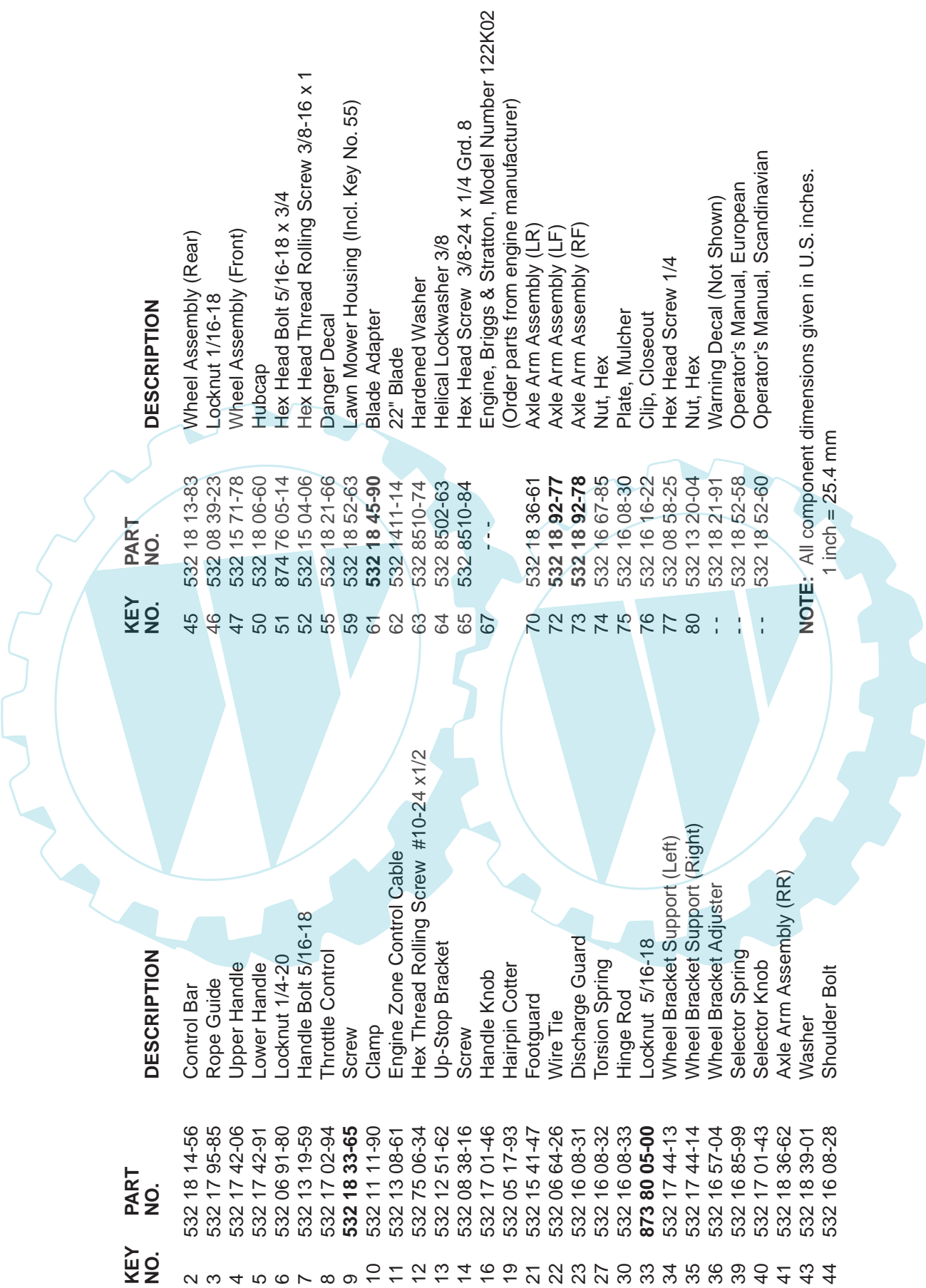
**PRO MAC  
6.0 HORSEPOWER  
22" SIDE-DISCHARGE LAWN MOWER  
MODEL NO. PM655HW (PM655HWB)  
964 79 59-00**



ROTARY LAWN MOWER -- MODEL NUMBER PM655HW (PM655HWP) PRODUCT NUMBER 964 79 59-00



ROTARY LAWN MOWER - - MODEL NUMBER PM655HW (PM655HWB) PRODUCT NUMBER 964 79 59-00



KEY NO.	PART NO.	DESCRIPTION	KEY NO.	PART NO.	DESCRIPTION
2	532 18 14-56	Control Bar	45	532 18 13-83	Wheel Assembly (Rear)
3	532 17 95-85	Rope Guide	46	532 08 39-23	Locknut 1/16-18
4	532 17 42-06	Upper Handle	47	532 15 71-78	Wheel Assembly (Front)
5	532 17 42-91	Lower Handle	50	532 18 06-60	Hubcap
6	532 06 91-80	Locknut 1/4-20	51	874 76 05-14	Hex Head Bolt 5/16-18 x 3/4
7	532 13 19-59	Handle Bolt 5/16-18	52	532 15 04-06	Hex Head Thread Rolling Screw 3/8-16 x 1
8	532 17 02-94	Throttle Control	55	532 18 21-66	Danger Decal
9	<b>532 18 33-65</b>	Screw	59	532 18 52-63	Lawn Mower Housing (Incl. Key No. 55)
10	532 11 11-90	Clamp	61	<b>532 18 45-90</b>	Blade Adapter
11	532 13 08-61	Engine Zone Control Cable	62	532 1411-14	22" Blade
12	532 75 06-34	Hex Thread Rolling Screw #10-24 x1/2	63	532 8510-74	Hardened Washer
13	532 12 51-62	Up-Stop Bracket	64	532 8502-63	Helical Lockwasher 3/8
14	532 08 38-16	Screw	65	532 8510-84	Hex Head Screw 3/8-24 x 1/4 Grd. 8
16	532 17 01-46	Handle Knob	67	---	Engine, Briggs & Stratton, Model Number 122K02 (Order parts from engine manufacturer)
19	532 05 17-93	Hairpin Cotter	70	532 18 36-61	Axle Arm Assembly (LR)
21	532 15 41-47	Footguard	72	<b>532 18 92-77</b>	Axle Arm Assembly (LF)
22	532 06 64-26	Wire Tie	73	<b>532 18 92-78</b>	Axle Arm Assembly (RF)
23	532 16 08-31	Discharge Guard	74	532 16 67-85	Nut, Hex
27	532 16 08-32	Torsion Spring	75	532 16 08-30	Plate, Mulcher
30	532 16 08-33	Hinge Rod	76	532 16 16-22	Clip, Closeout
33	<b>873 80 05-00</b>	Locknut 5/16-18	77	532 08 58-25	Hex Head Screw 1/4
34	532 17 44-13	Wheel Bracket Support (Left)	80	532 13 20-04	Nut, Hex
35	532 17 44-14	Wheel Bracket Support (Right)	---	532 18 21-91	Warning Decal (Not Shown)
36	532 16 57-04	Wheel Bracket Adjuster	---	532 18 52-58	Operator's Manual, European
39	532 16 85-99	Selector Spring	---	532 18 52-60	Operator's Manual, Scandinavian
40	532 17 01-43	Selector Knob			
41	532 18 36-62	Axle Arm Assembly (RR)			
43	532 18 39-01	Washer			
44	532 16 08-28	Shoulder Bolt			

**NOTE:** All component dimensions given in U.S. inches.  
1 inch = 25.4 mm